



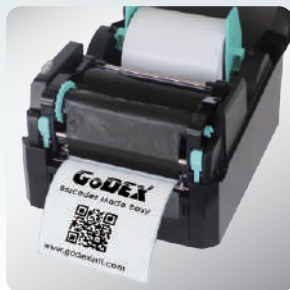
GE300 / GE330

Economical 4" Thermal Transfer Desktop Printer

Use the GE300 for all you light to medium duty thermal transfer barcode printing applications



Ethernet, Serial and USB ports included



Uses standard low-cost labels and ribbons



High cost-effectiveness for large amount printing



Free labeling software GoLabel for easy printing



GE300 series Desktop Printer

Barcodes Made Easy

Model		GE300	GE330
Print Method		Thermal Transfer / Direct Thermal	
Resolution		203 dpi (8 dot/mm)	300 dpi (12 dots/mm)
Print Speed		5 IPS (102 mm/s)	4 IPS (76.2 mm/s)
Print Width		4.25" (108 mm)	4.16" (105.7 mm)
Print Length		Min. 0.16" (4 mm)** ; Max. 68" (1727 mm)	Min. 0.16" (4 mm)**; Max. 30" (762 mm)
Processor		32 Bit RISC CPU	
Memory	Flash	8 MB Flash (4 MB for user storage)	
	SDRAM	16 MB	
Sensor Type		Adjustable reflective sensor (full range). Fixed transmissive sensor	
Media	Types	Continuous form, gap labels, black mark sensing, and punched hole; label length set by auto sensing or programming	
	Width	Min. 1" (25.4 mm) – Max. 4.64" (118 mm)	
	Thickness	Min. 0.003" (0.06 mm) – Max. 0.008" (0.20 mm)	
	Label Roll Diameter	Max. 5" (127 mm)	
Ribbon	Core Diameter	1" (25.4 mm), 1.5" (38.1 mm)	
	Types	Wax, Wax / Resin, Resin	
	Length	360' (110 m)	
	Width	Min. 1.18" (30 mm) – Max. 4.33" (110 mm)	
Printer Language	Ribbon Roll Diameter	1.57" (40 mm)	
	Core Diameter	0.5" (12.7 mm)	
Printer Language		EZPL, GEPL, GZPL auto switch	
Software	Label Design Software	GoLabel (for EZPL only)	
	Driver	MAC · Linux · Windows 2000, XP, Vista, Windows 7, 8.1 and 10 , Windows Server 2003 & 2008 & 2012	
	DLL	Win CE , .NET , Windows Mobile, Windows 2000 / XP / VISTA / Windows 7 / Windows 8.1 / Android	
Resident Fonts	Bitmap Fonts	6, 8, 10, 12, 14, 18, 24, 30, 16X26 and OCR A&B Bitmap fonts 90°, 180°, 270° rotatable, single characters 90°, 180°, 270° rotatable Bitmap fonts 8 times expandable in horizontal and vertical directions	
	TTF Fonts	TTF Fonts (Bold / Italic / Underline) . 0°, 90°, 180°, 270° rotatable	
Download Fonts	Bitmap Fonts	90°, 180°, 270° rotatable, single characters 90°, 180°, 270° rotatable	
	Asian Fonts	16x16, 24x24. Traditional Chinese (BIG-5), Simplified Chinese (GB2312), Japanese (S-JIS), Korean (KS-X1001) 90°, 180°, 270° rotatable and 8 times expandable in horizontal and vertical directions	
	TTF Fonts	TTF Fonts (Bold / Italic / Underline) . 0°, 90°, 180°, 270° rotatable	
Barcodes	1-D Bar codes	Code 39, Code 93, EAN-8, EAN-13, EAN 8/13 (with 2 & 5 digits extension), UPC-A, UPC-E, UPC-A and UPC-E with EAN 2 or 5 digit extension, Interleaved 2-of-5 (I 2 of 5), Interleaved 2- of 5 with Shipping Bearer Bars, Codabar, Code 128 (subset A, B, C), EAN 128, RPS 128, UCC 128, UCC/EAN-128 K-Mart, Random Weight, Postnet, ITF 14, China Postal Code, HIBC, MSI, Plessey, Telepen, FIM, GS1 DataBar, German Post Code, Planet 11 & 13 digit, Japanese Postnet, Standard 2 of 5, Industrial 2 of 5 , Logmars, Code 11, ISBT -128, Code 32	
	2-D Bar codes	PDF417, Datamatrix code, MaxiCode, QR code, Micro PDF417, Micro QR code and Aztec code, Code 49, Codablock F , TLC 39	
Code Pages		Codepage 437, 850, 851, 852, 855, 857, 860, 861, 862, 863, 865, 866, 869, 737 Windows 1250, 1251, 1252, 1253, 1254, 1255, 1257 Unicode UTF8 · UTF16BE · UTF16LE	
Graphics		Resident graphic file types are BMP and PCX, other graphic formats are downloadable from the software	
Interfaces		USB 2.0 Serial port: RS-232 (DB-9) Ethernet 10/100 Mbps	
Control Panel		One Tri-color LED: Power (Green, Orange and Red) Function Key: FEED	
Power		Switching power 100-240VAC, 50-60Hz input	
Environment	Operation Temperature	41°F to 104°F (5°C to 40°C)	
	Storage Temperature	-4°F to 122°F (-20°C to 50°C)	
Humidity	Operation	30-85%, non-condensing	
	Storage	10-90%, non-condensing	
Agency Approvals			
Dimension	Length	251 mm (9.88")	
	Height	196.35 mm(7.74")	
	Width	164 mm (6.46")	
Weight		< 2Kg, exclusive consumables	
Options		Cutter (Factory Install) External label unwind Stand External label rewinder Bluetooth Wireless LAN (IEEE 802.11 b/g/n) Real Time Clock (RTC)	

*Specifications are subject to change without notice. All company and/or product names are trademarks and/or registered trademarks of their respective owners.

**Minimum print height and maximum print speed specification compliance can be dependent on non-standard material variables such as label type, thickness, spacing, liner construction, etc. GoDEX is pleased to test non-standard materials for minimum print height, and maximum print speed capability.

Applications

Applications for Labels & Barcodes

GE300 / GE330 series is your best friend for getting the job done instantly.



Health Care

Tube tags, pharmaceutical labels, patient identification, medical records and laboratory specimen tags.

Warehouses, Logistic & Transportation

Case pack labels, address labels, product serial number labels, inventory management, shipping labels, or related industrial applications.

Administration

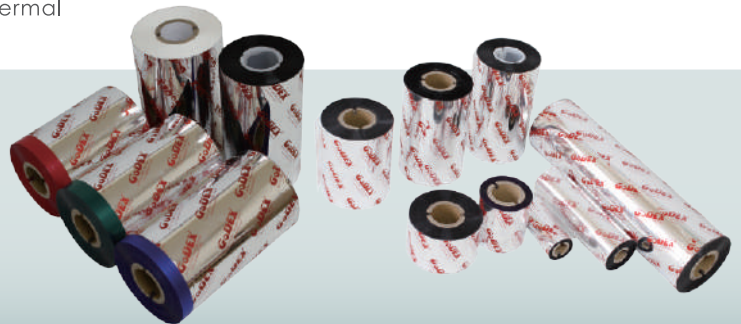
ID cards, document and records management, access control management, library management & organization and classification system, ISBN application, etc.

GoDEX RIBBONS

High quality original GoDEX thermal transfer ribbons

GoDEX offers premium thermal transfer ribbons that will fit most of your printing applications.

- Wax
- Wax/ Resin
- Resin
- Near Edge

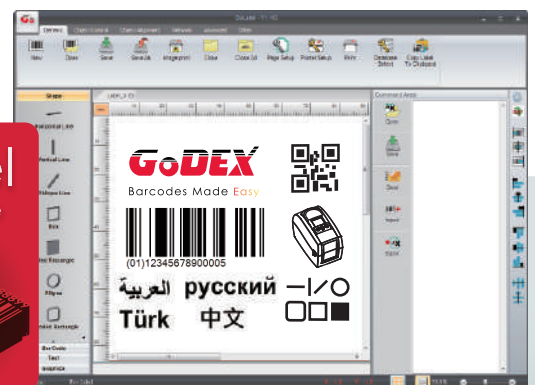


GoDEX LABEL DESIGN SOFTWARE

GoLabel Software / User Friendly

GoLabel is based on a WYSIWYG (what you see is what you get) user interface, makes everything so easy for you to create and print barcode labels. GoLabel is the first-choice label design software that you can't miss it!

Go visit www.godexintl.com and download GoLabel to experience it!



Martek Industries Ltd
12B Ridings Park Industrial Estate
Cannock - WS11 7FJ

Tel: 01543 502202
godex.co.uk
sales@godex.co.uk