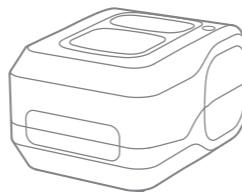
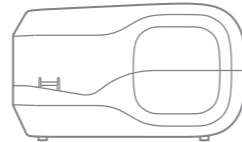
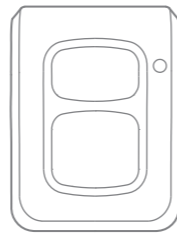


4T500 SERIES Desktop Thermal Transfer Bar Code Printer

zenpert

| PRINTER MODEL | 4T520 | 4T530 |
|-------------------------------|---|-----------------------------|
| Resolution | 8 dots/mm (203 DPI) | 12 dots/mm (300 DPI) |
| Printing method | Thermal Transfer & Direct Thermal | |
| Max. print speed | 152 mm(6")/ second | 102 mm(4")/ second |
| Max. print width | 108 mm (4.25") | 105.6 mm (4.16") |
| Max. print length | 25,400 mm (1,000") | 11,430 mm (450") |
| Enclosure | PC and ABS plastic | |
| Physical dimension | 211 mm(W) x 164 mm(H) x 279 mm(D) 8.31"(W) x 6.46"(H) x 10.98"(D) | |
| Weight | 2.0 kg (4.41 lbs.) | |
| Label roll capacity | 127 mm (5")OD | |
| Ribbon | 300 m long, max. OD 67 mm, 1" core (ink coated outside) 110 m long, max. OD 40 mm, 0.5" core (ink coated outside) | |
| Ribbon width | 40 mm ~ 110 mm (1.6" ~ 4.3") | |
| Processor | 32-bit RISC CPU | |
| Memory | · 16 MB Flash memory · 64 MB SDRAM | |
| Interface | USB 2.0 | |
| Power | External universal switching power supply · Input : AC 100-240V, 2.0A, 50-60Hz · Output : DC 24V, 2.0A, 48W | |
| Operation switch, button, LED | · 1 Power switch · 1 operation button (pause/feed) · 1 LED (3 colors : green \ orange & red) | |
| Sensors | · Transmissive gap sensor · Black mark reflective sensor · Ribbon end sensor · Head open sensor | |
| Internal fonts | · 8 alpha-numeric bitmap fonts · Windows font can be downloaded by software | |
| Bar code | · 1D barcode Code 128UCC, Code 128 subsets A, B, C, EAN128, Interleaved 2 of 5, Interleaved 2 of 5 with check digit, Code 39, Code 39 with check digit, Code 93, EAN13, EAN8, UPCA, UPCE, EAN and UPC 2 (5) digits add-on, Codabar, Postnet, MSI, MSI with check digit, PLESSEY, China post, ITF14, Code 11, TELEPEN, TELEPENN, PLANET, Code49, Deutsche Post Identcode, Deutsche Post Leitcode, LOGMARS · 2D barcode GS1 DataBar, GS1 DataMatrix, Maxicode, AZTEC, PDF417, QR Code, Micro PDF 417 | |
| Font and barcode rotation | 0° \ 90° \ 180° \ 270° | |
| Printer language | TSPL-EZD (Compatible with EPL, ZPL, ZPL II, DPL) | |
| Media type | Continuous \ die-cut \ black mark \ fan-fold (outside wound) | |
| Media width | 19 ~ 118 mm (0.8" ~ 4.6") | |
| Media thickness | 0.06 ~ 0.19 mm (2.36 ~ 7.48 mil) | |
| Media core diameter | 25.4 mm (1.0") | |
| Label length | 5 ~ 25,400 mm (0.2" ~ 1000") | 5 ~ 11,430 mm (0.2" ~ 450") |
| Environment condition | Operation: 0 ~ 40°C, humidity (non-condensing) 10 ~ 85% Storage: -20 ~ 60°C, humidity (non-condensing) 5 ~ 90% | |
| Safety regulation | BIS, KC | |
| Environmental concern | Comply with RoHS, REACH, WEEE | |
| Accessories | · Quick start guide · USB cable · Power cord · External universal switching power supply · Label spindle x 1, fixing tab x 2 · 1" ribbon spindle x 2 · 0.5" ribbon spindle x 2 | |



4T500 SERIES

Desktop Thermal Transfer Bar Code Printer

USER FRIENDLY DESIGN,
THE PERFECT FIT!



zenpert

zenpert, Your Printing Specialist

The tracking and management of barcode label is one of the essential elements for the smooth operation of a company, small and large.

Therefore, a business owner always wants to find a barcode printer with high performance, while employees of a company look forward to quick smart printing.

Less is More

A strong belief in this concept gave rise to zenpert.

The name of "zenpert" originates from "expert" and implies the expertise in providing premium service to customers. In its Chinese name, the character "摺" (pinyin: bo) means "thumb" and implies the proficiency in strategic planning and symbolizes for the position as an industry leader.

zenpert has a thorough understanding of customers' needs in various markets and has become the best business partner for its customers on the strength of advanced technology, unsurpassed quality and considerate service.

zenpert is backed up by the first specialized barcode equipment manufacturer in Taiwan which has produced and sold barcode printers all over the world.

In spite of the fast changing market condition, zenpert will provide its business partners with the best products and services on the basis of robust, swift and flexible DNA plus proficient technical team, and at the same time instill fresh air and vitality into the barcode printers market.

Brand Philosophy

We win when our customers win!

We are spurred on to further progress by the wish to help our customers grow their businesses and establish win-win partnership with them.

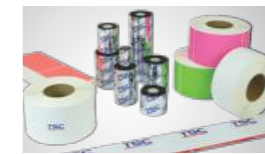
Advantages



Compact design and stable performance



Two printing methods – support direct thermal & thermal transfer



Varied printing application – offer labeling software



Print fast (6 ips) – save working time

Feature

- Smooth printing experience
- Large supplies capacity – 300 meters (984') ribbon supply or 110 meters (361') ribbon supply on a 12.7 mm (0.5") core
- Print width up to 108 mm—supports multiple media types
- Position adjustable sensor – print precisely
- Automatic calibration – speed up printing test
- Media window design – easily check supplies stock status
- High-class thermal printing head – clear print quality and enhance durability
- User friendly design for easy installing media and ribbon
- USB 2.0 fast transmission speed
- Print quietly – low operation noise providing quality working environment
- Optimized heat radiation design – durable for large volume printing

Application market

- Shelf Labeling
- Compliance Labeling
- Receipt/Coupon Printing
- Shipping & Receiving
- File-Folder Labeling
- Asset Tracking
- Specimen Labeling
- Patient Tracking



Fast speed printing



User friendly design



Varied printing application



Reliable & stable



Power saving



Clear print quality

